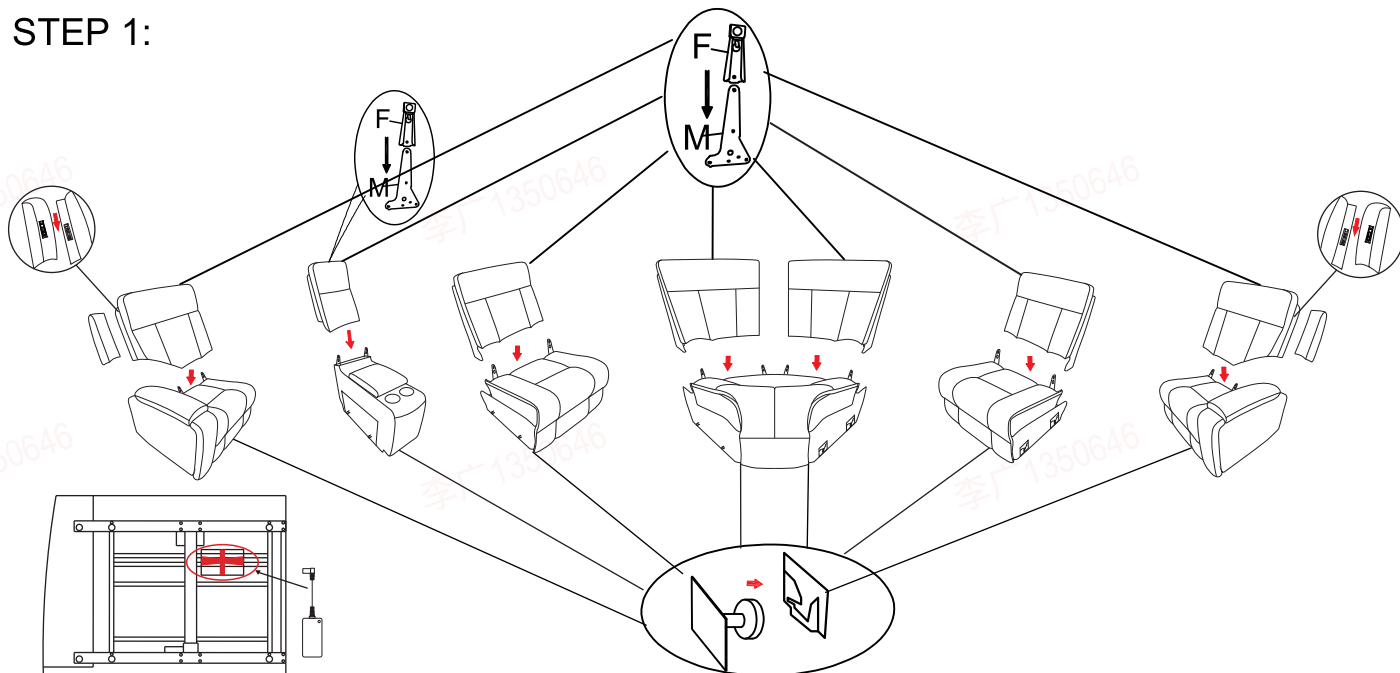


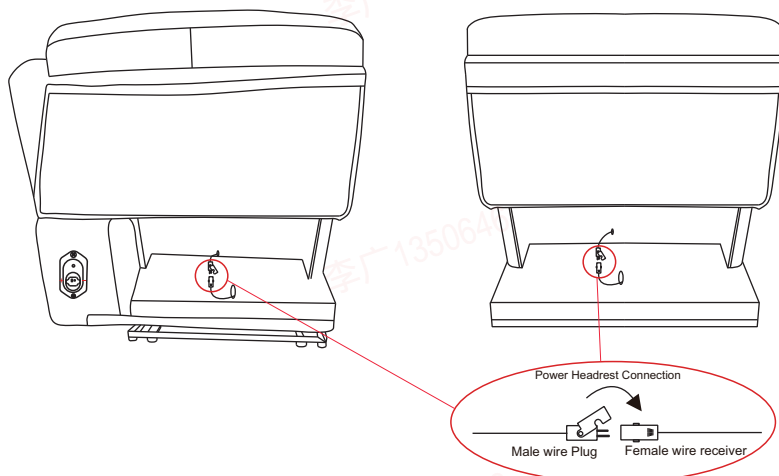
# ASSEMBLY INSTRUCTION

## SANTOS SECTIONAL

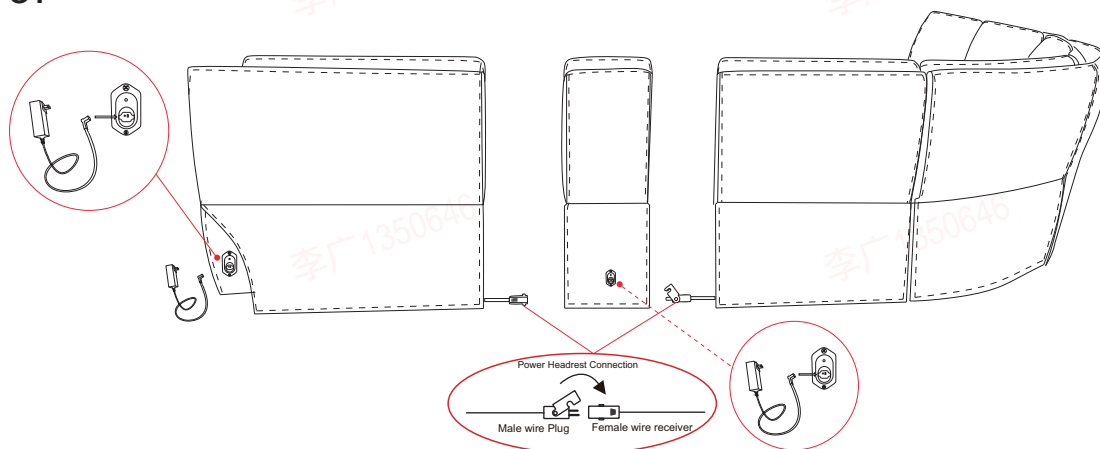
### STEP 1:



### STEP 2:



### STEP 3:

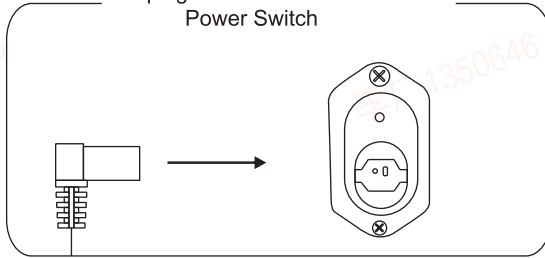


# ASSEMBLY INSTRUCTION

## SANTOS SECTIONAL

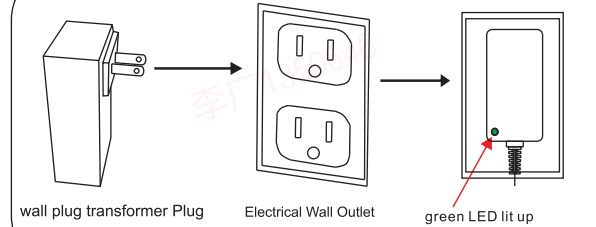
STEP 4: Connect wall plug transformer to transformer switch.

wall plug transformer to Transformer  
Power Switch



STEP 5: Connect wall plug transformer from Left Arm Seat to outlet.

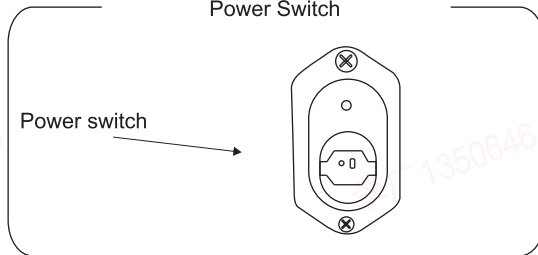
wall plug transformer to Electrical Outlet



STEP 6: After all connections have been made, ensure that transformer power switch is switched to the "on" position.

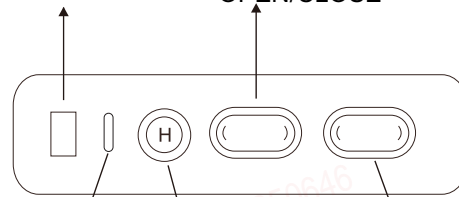
Power Switch

Power switch



USB PORT

PWR HEADREST  
OPEN/CLOSE



Type-C

HOME BUTTON

SEAT OPEN/CLOSE

STEP 7:

